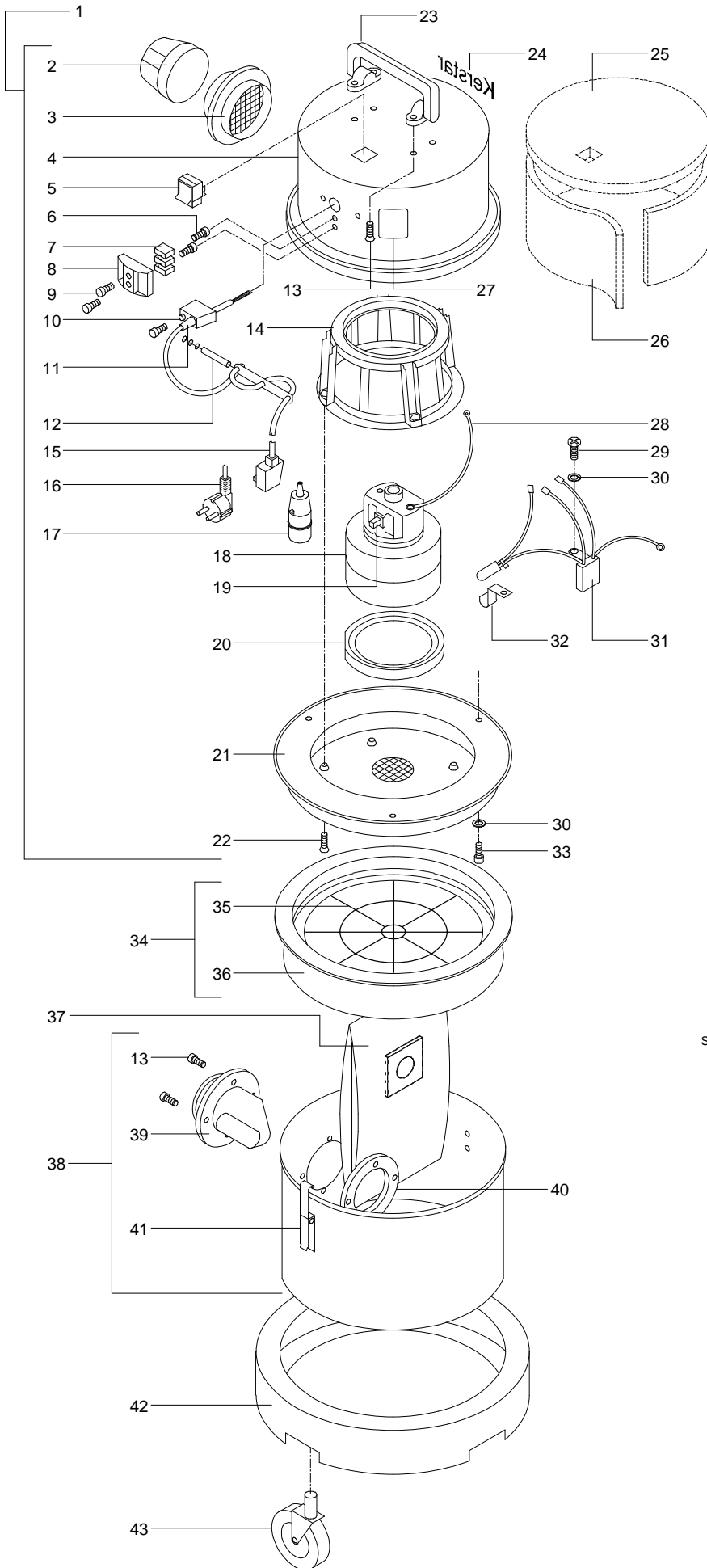
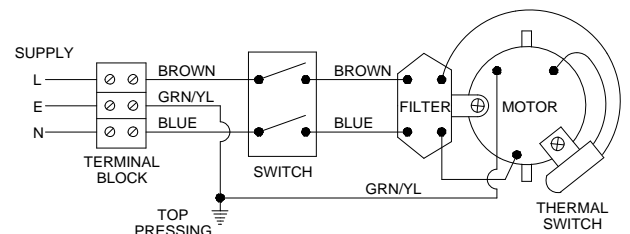


# KV15/1



ITEM	QTY	DESCRIPTION
1	1	KV15/1 MOTOR HEAD 230V KV15/1 MOTOR HEAD 110V
2	1	DIFFUSER
3	1	EXHAUST BLOWER
4	1	KV15 & 18 TOP PRESSING INC BLOWER
5	1	DRY VAC ROCKER SWITCH BLACK
6	2	No4 x 3/4" PAN POZI SELF TAP SCREW
7	1	TERMINAL BLOCK 3 WAY
8	1	TERMINAL BLOCK HOLDER
9	2	No6 x 1/2" PAN POZI SELF TAP SCREW
10	1	CABLE CLAMP INC SCREW & GROMMET
11	1	CABLE GROMMET
12	1	CABLE RESTRAINT
13	8	No10 x 1/2" PAN POZI PLASTITE SCREW
14	1	PLASTIC MOTOR MOUNTING BRACKET
15	1	CABLE/PLUG PACK 10M x 0.75mm 3 CORE WITH UK PLUG
16	1	CABLE/PLUG PACK 10M x 0.75mm 3 CORE WITH EURO PLUG
17	1	CABLE/PLUG PACK 10M x 1.5mm 3 CORE WITH 16A 110V PLUG
18	1	MOTOR DIRECT AIRFLOW 230V 1,000W
18	1	MOTOR DIRECT AIRFLOW 110V 1,000W
19	1PR	CARBON BRUSHES 230V 1,000W DAF & BP
19	1PR	CARBON BRUSHES 110V 1,000W DAF & BP
20	1	MOTOR MOUNTING RING MK3
21	1	KV15 & 18 MOTOR PLATE
22	4	No10 x 3/4" C/SUNK POZI PLASTITE SCREW
23	1	FLIP FLOP HANDLE ASSEMBLY
24	1	KERSTAR RED TRANSFER
25	1	FOAM SILENCING KV15/18 TOP
26	1	FOAM SILENCING KV15/18 SIDE
27	1	DRY VAC ONLY WARNING LABEL
28	1	EARTH LEAD 270mm
29	1	No8 x 3/8" PAN POZI SELF TAP SCREW
30	4	M4 SHAKEPROOF WASHER
31	1	FILTER/THERMAL SWITCH 230V M1/608
31	1	FILTER/THERMAL SWITCH 110V M1B/619
32	1	CLIP FOR THERMAL SWITCH
33	3	M4 x 12 PAN POZI SCREW
34	1	12" HIGH EFFICIENCY FILTER ASSEMBLY
35	1	12" FILTER FRAME
36	1	12" HIGH EFFICIENCY FILTER CLOTH
37	1	K1 PAPER BAG
38	1	KV15 CAN ASSEMBLY
39	1	HOSE ENTRY SPIGOT DRY VAC
40	1	SPIGOT RETAINER FOR METAL CAN
41	3	CLIP FOR Max, Prima, KV5, 10, 15 & 18
42	1	12" CHASSIS (NO CASTORS)
43	4	75mm PUSH IN CASTOR

## Wiring Diagram



FROM SERIAL No.